

# CLASS A DISTRIBUTION ON LUSH CAMPUS

56,876 SF » 162,800 SF » 155,234 SF » AVAILABLE FOR LEASE

4733 | 4763 | 4851

WEST ATLANTIC BOULEVARD  
COCONUT CREEK, FL 33063

# GREYSTAR



## COCONUT CREEK'S NEW BUSINESS PARK

**DELIVERY**  
BUILDING A » 2Q 2026  
BUILDING B & C » 3Q 2026

DEVELOPMENT

# GREYSTAR

 **WHITMAN PETERSON**

FOR MORE INFORMATION CONTACT

LEASING BROKER

JC Conte, SIOR  
EVP & Director  
Industrial Brokerage Services  
M: 954.336.8001  
JCConte@butters.com

LEASING BROKER

Brian Ahearn, CCIM  
Senior Vice President  
Industrial Brokerage Services  
M: 954.937.4540  
BAhearn@butters.com

LEASING BROKER

Virginia Calcaño  
Senior Associate  
Industrial Brokerage Services  
M: 954.588.9033  
VCalcano@butters.com

LEASING PARTNER



No warranty or representation is made to the accuracy of the foregoing information. Terms or sale or lease or availability are subject to change or withdrawal without notice.

**CONSTRUCTION PROGRESS AERIAL » MAY 2026**



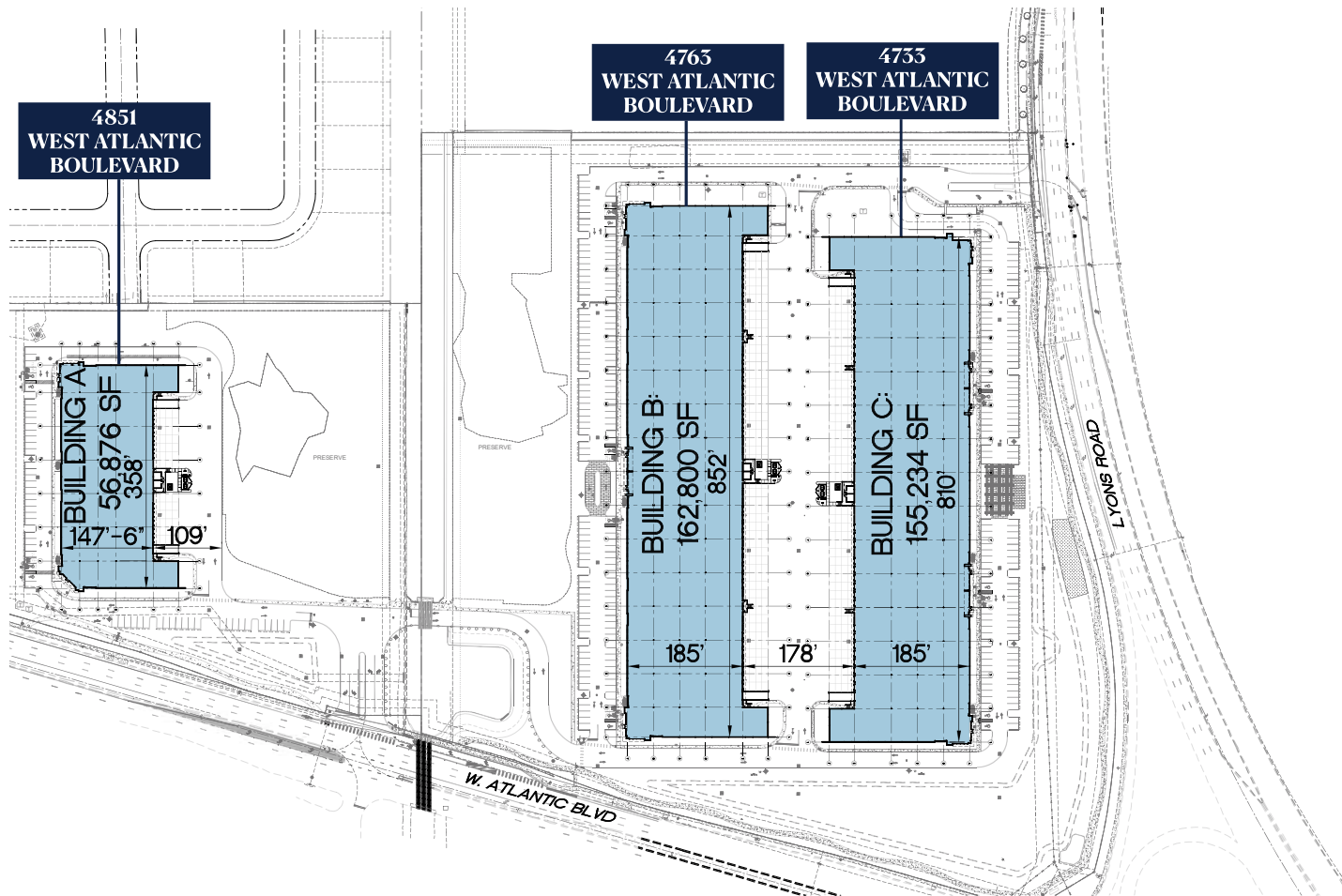
## PROPERTY HIGHLIGHTS

- » Located along West Atlantic Boulevard and South Lyons Road in Coconut Creek
- » Strong visibility with efficient access and connectivity to both Florida's Turnpike and I-95, the major South Florida Commercial arteries
- » Central North Broward location within an established commercial and industrial hub
- » Well-suited for a range of shallow bay industrial-distribution users
- » Proximity to surrounding retail and service amenities supporting tenant convenience and workforce accessibility
- » Core, infill location offering long-term operational efficiency

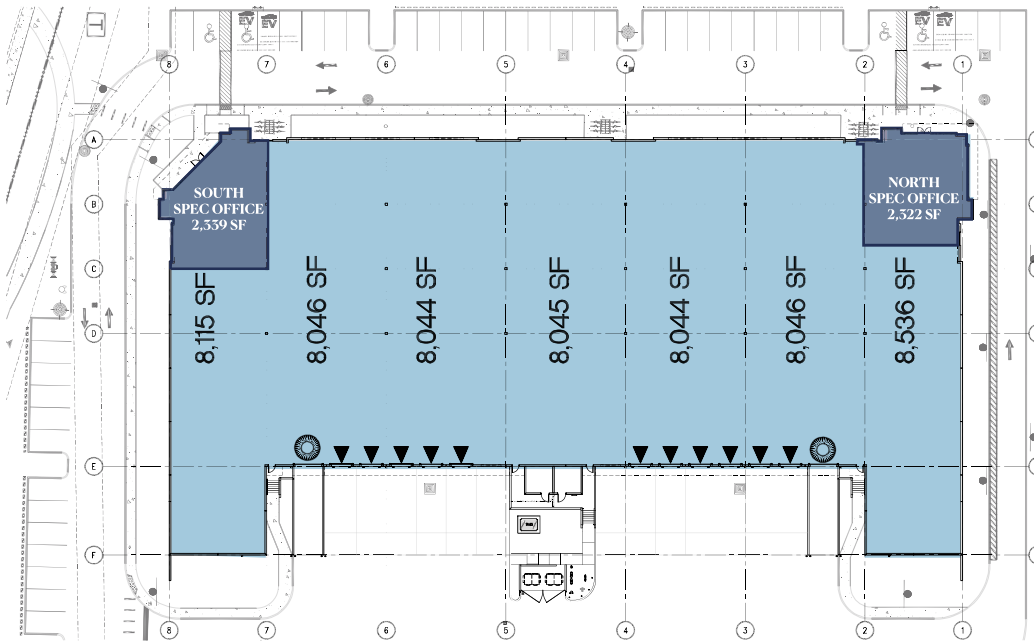


**MASTER PLAN**

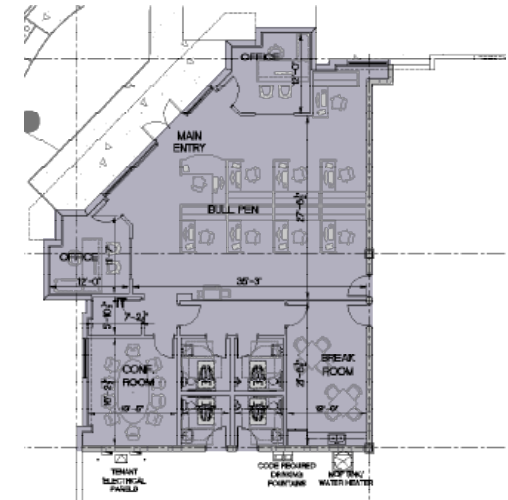
Cocomar Business Park is a three-building, rear-loaded Class A industrial business park totaling ±374,910 SF. The project features 32' clear heights, 54' column spacing, 6" slab floors, ESRF fire protection, R-19 insulated roofing, and two spec offices per building. The site offers 78 dock-high doors, 6 drive-in doors, truck courts up to 178', and balanced on-site parking with average ratios of 1.02 Building A, 1.20 Building B and 1.28 Building C, supporting efficient single- or multi-tenant operations.



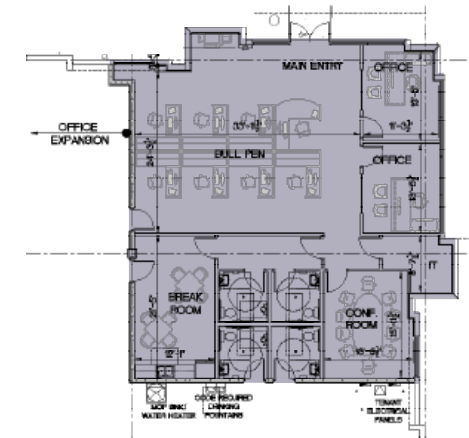
## BUILDING A » 56,876 SF 4851 WEST ATLANTIC BOULEVARD



### SOUTH SPEC OFFICE » 2,539 SF



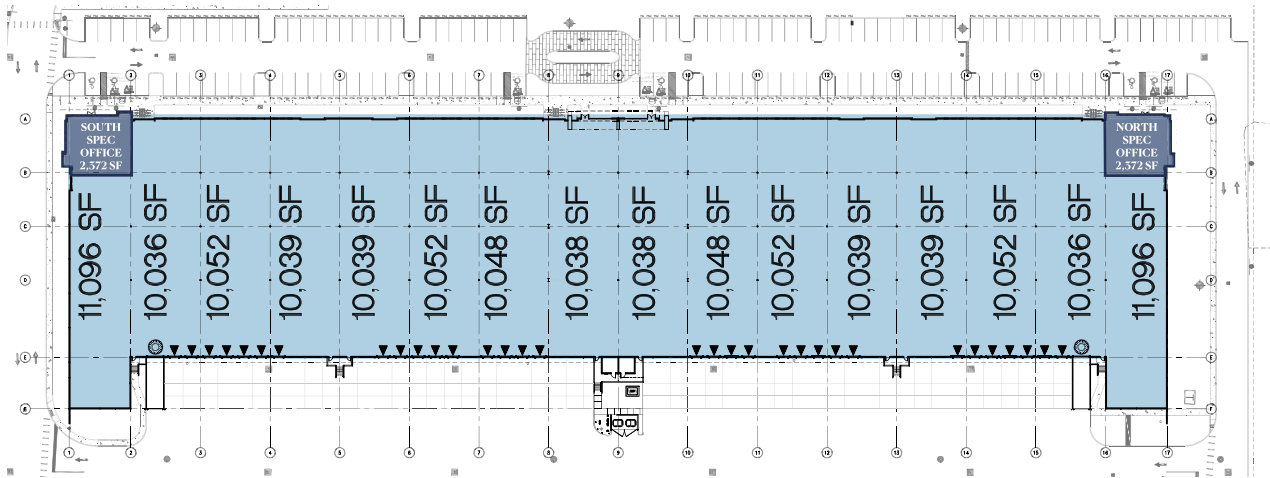
### NORTH SPEC OFFICE » 2,522 SF



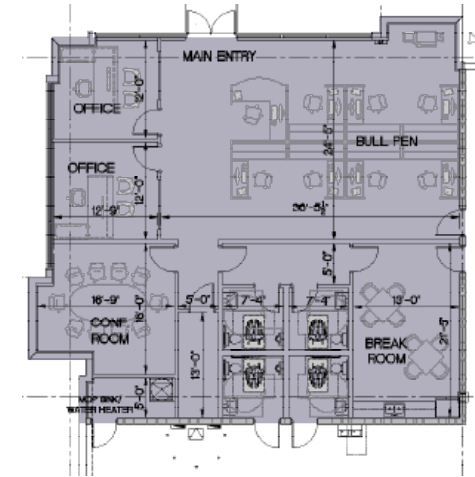
### BUILDING SPECIFICATIONS

» BUILDING SF:	56,876	» DRIVE-IN DOORS-RAMPS:	2
» CLEAR HEIGHT:	52'	» CONSTRUCTION:	Type 11-8
» BUILDING DIMENSIONS:	358' X 147'-6"	» ROOF SYSTEM:	R19
» LOADING:	Rear-Loading	» FIRE & LIFE SAFETY:	ESFR
» TRUCK COURT DEPTH:	109'	» SPEC OFFICE:	2,539 SF (S)   2,522 SF (N)
» PARKING:	56	» COLUMN SPACING:	54'
» PARKING RATIO:	1.02	» SLAB THICKNESS:	6"
» DOCK DOORS:	11	» DELIVERY:	2Q 2026

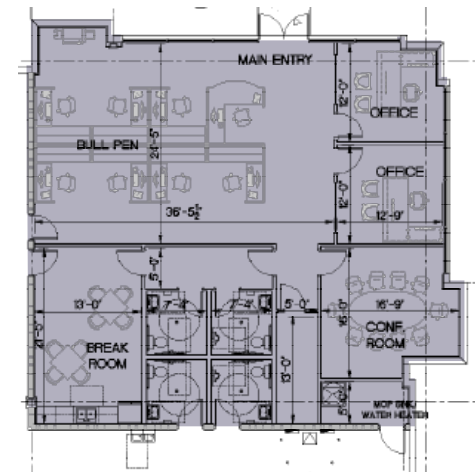
## BUILDING B » 162,800 SF 4763 WEST ATLANTIC BOULEVARD



### SOUTH SPEC OFFICE » 2,372 SF



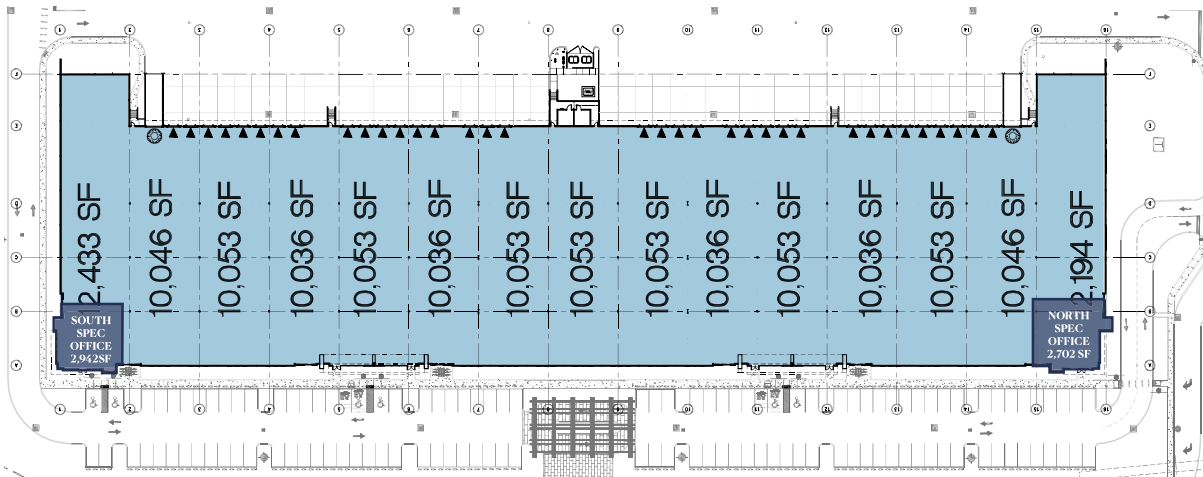
### NORTH SPEC OFFICE » 2,372 SF



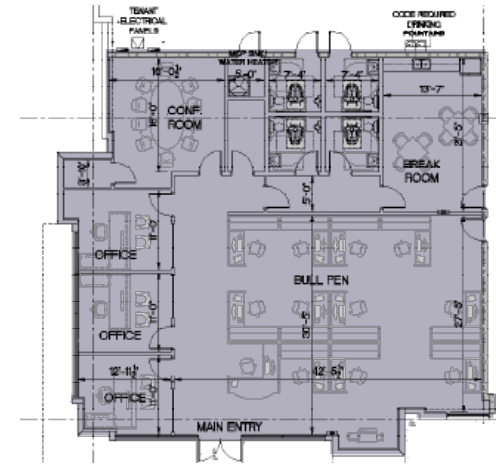
### BUILDING SPECIFICATIONS

» BUILDING SF:	162,800	» DRIVE-IN DOORS-RAMPS:	2
» CLEAR HEIGHT:	32'	» CONSTRUCTION:	Type 11-8
» BUILDING DIMENSIONS:	852' X 185'	» ROOF SYSTEM:	R19
» LOADING:	Rear-Loading	» FIRE & LIFE SAFETY:	ESFR
» TRUCK COURT DEPTH:	178'	» SPEC OFFICE:	2,372 SF (S)   2,372 SF (N)
» PARKING:	136	» COLUMN SPACING:	54'
» PARKING RATIO:	1.20	» SLAB THICKNESS:	6"
» DOCK DOORS:	32	» DELIVERY:	3Q 2026

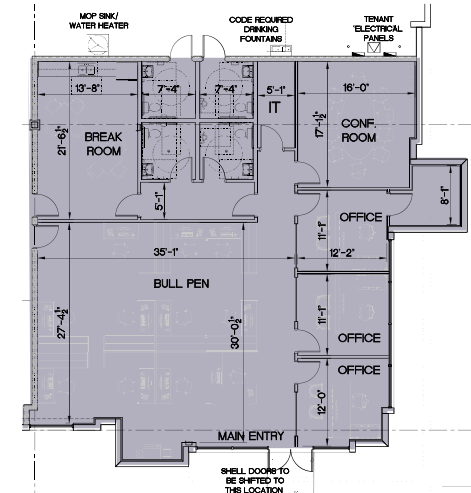
## BUILDING C » 155,234 SF 4733 WEST ATLANTIC BOULEVARD



### SOUTH SPEC OFFICE » 2,942 SF



### NORTH SPEC OFFICE » 2,702 SF



### BUILDING SPECIFICATIONS

» BUILDING SF:	155,234	» DRIVE-IN DOORS-RAMP:	2
» CLEAR HEIGHT:	32'	» CONSTRUCTION:	Type 11-8
» BUILDING DIMENSIONS:	810' X 185'	» ROOF SYSTEM:	R19
» LOADING:	Rear-Loading	» FIRE & LIFE SAFETY:	ESFR
» TRUCK COURT DEPTH:	178'	» SPEC OFFICE:	2,942 SF (S)   2,702 SF (N)
» PARKING:	121	» COLUMN SPACING:	54'
» PARKING RATIO:	1.28	» SLAB THICKNESS:	6"
» DOCK DOORS:	35	» DELIVERY:	3Q 2026

## RENDERINGS



**Cocomar Business Park** is a Class A industrial development designed to meet the standards of modern industrial and logistics users. The project features 32' clear heights, ESFR sprinklers, wide truck courts, as well as ample parking and dock-doors. The park is verdantly landscaped, complementing the modern, functional design, making Cocomar Business Park an ideal place to operate a business.

The highly functional site plan features wide internal roadways, full circulation, curb appeal, and frontage on West Atlantic Boulevard. The project is prominently positioned within the Broward Industrial Submarket



**Cocomar Business Park** the last new Class A industrial development in Coconut Creek. Set within a professionally designed business park featuring dense, robust landscaping and prominent West Atlantic Boulevard frontage, it represents a limited opportunity to secure modern industrial space in the fully built-out, high-demand Broward submarket.

## PREMIER LOCATION ADVANTAGES

- » Florida's Turnpike – providing efficient north–south regional access
- » I-95 and Sawgrass Expressway – convenient connectivity across Broward, Palm Beach and Miami-Dade counties
- » Port Everglades – supporting regional and international distribution
- » Fort Lauderdale–Hollywood International Airport
- » The Promenade at Coconut Creek – retail, dining, and service amenities
- » Major North Broward labor pool and surrounding industrial submarket

- » Fort Lauderdale–Hollywood International Airport: ~11 miles
- » Port Everglades: ~10 miles
- » Downtown Fort Lauderdale: ~9 miles
- » The Promenade at Coconut Creek (4443 Lyons Rd): ~5 miles
- » Florida's Turnpike: ~ 0.5 miles
- » I-95 (nearest interchange): ~5miles
- » SR-441: ~ 0.9miles
- » Sawgrass Expressway (SR-869): ~7 miles

AREA DEMOGRAPHICS	1 MILE	5 MILE	5 MILE
2029 Population Projection	17,844/ 8.28%	175,198/ 6.29%	469,617/ 6.12%
Households Owner Occupied	3,275/ 53.19%	40,877/ 63.74%	99,120/ 59.07%
2024 Avg Household Income	\$83,882	\$84,661	\$87,694

### AREA TRAFFIC COUNTS

West Atlantic Boulevard	52,027
Lyons Road	29,559

## WHAT'S NEAR BY

- |                            |                         |
|----------------------------|-------------------------|
| 1. Publix                  | 12. Costco              |
| 2. Walmart                 | 15. The Promenade Shops |
| 3. BCC- North Campus       | 14. Cheesecake Factory  |
| 4. Shell Gas Station       | 15. Starbucks           |
| 5. Floor and Decor         | 16. Home Depot          |
| 6. Top Golf                | 17. Lowes               |
| 7. Wawa                    | 18. HomeGoods           |
| 8. Flanigans               | 19. Target              |
| 9. Houston's               | 20. Dunkin Donuts       |
| 10. Lucky Fish Bar & Grill | 21. Chick- fil- A       |
| 11. Oceanic                | 22. Fedex               |



# COCOMAR

## BUSINESS PARK

STRATEGICALLY LOCATED FOR PERFORMANCE

DEVELOPMENT

**GREYSTAR**<sup>®</sup>



**WHITMAN PETERSON**

LEASING BROKER



JC Conte, SIOR  
EVP & Director  
Industrial Brokerage Services  
M: 954.336.8001  
JCConte@butters.com

LEASING BROKER



Brian Ahearn, CCIM  
Senior Vice President  
Industrial Brokerage Services  
M: 954.937.4540  
BAhearn@butters.com

LEASING BROKER



Virginia Calcaño  
Senior Associate  
Industrial Brokerage Services  
M: 954.588.9033  
VCalcano@butters.com

LEASING PARTNER



No warranty or representation is made to the accuracy of the foregoing information. Terms or sale or lease or availability are subject to change or withdrawal without notice.